

home for peace . . .

Since 2007

®

**ASSURE**  
G R O U P

ISO 9001: 2015 QMS Certified



Plot # G-32, G-34, Road # 03, Sector # 01, Block # G  
Aftab Nagar, Dhaka, Bangladesh

AN EXCLUSIVE RESIDENTIAL PROJECT OF  
**ASSURE DEVELOPMENT & DESIGN LTD.**  
[www.assuregroupbd.com](http://www.assuregroupbd.com)

# PROJECT INFORMATION

## PROJECT NAME

**ASSURE *S.S RESIDENCE***

## PROJECT ADDRESS

Plot # G-32, G-34, Road # 03, Sector # 01, Block # G,  
Aftab Nagar, Dhaka, Bangladesh.

## NATURE

Residential

## STORIED

Ground + 7 Living Floor

## LAND AREA

6 Katha (More or Less)

## FACING

South Facing

## NO OF APARTMENTS

14 Nos.

## NO OF ELEVATOR/LIFT

1 Nos.

## APARTMENT SIZE

Type A- 1419 Sft.

Type B- 1387 Sft.

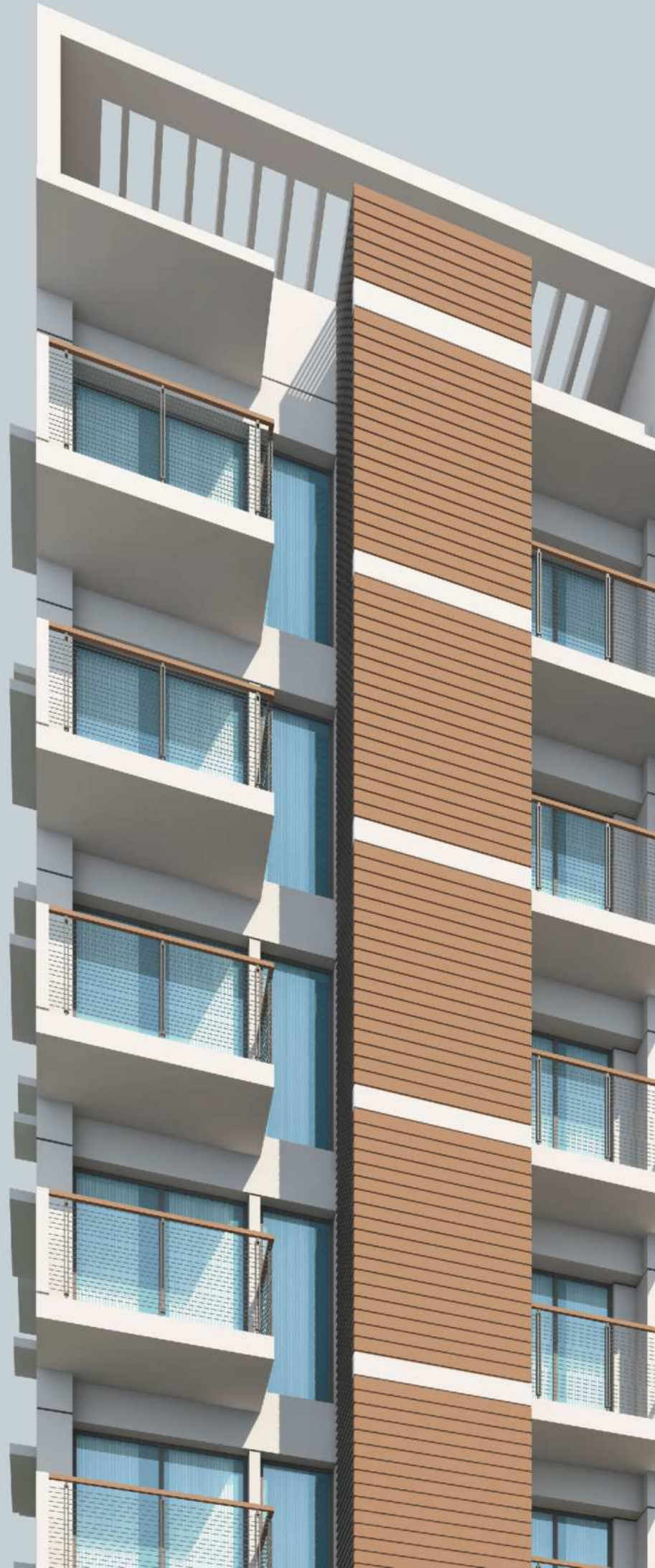
## APARTMENT CONTAINS

03 Beds, 03 Baths (02 Attached), 02 Ver, Living Cum  
Dining, Kitchen With Ver.

## COMMON FEATURES

Guard Post, Caretaker Bed, Meter Room, Sub-station  
at Ground Floor.

Community Space, Plantation, Cloth Drying Area,  
Machine Room at Roof-top.



# INTRODUCTION

It is a great deal of pleasure to introduce our new project, **ASSURE S.S RESIDENCE** at Plot # G-32, G-34, Road # 03, Sector # 01, Block # G, Aftab Nagar, Dhaka, Bangladesh.; one of the most calm & quite residential area for peaceful living.

While designing architect put the best effort on maximization of functional aspects as well as the aesthetics of the project, creating necessary comfortable space. The apartments in this complex are expression of contemporary architecture, equipped with modern, stylish, elegant fittings and fixture.

**ASSURE S.S RESIDENCE** is a Residential Complex featuring with all the modern facilities and amenities which you would demand of a home suited to your modern lifestyle. Our attention to detail is obvious in the architecture with contemporary design flair, incorporating all the functionality of each individual surrounding and proximity to civic center all together creates a unique site of its type that one would love to live in.







**PERSPECTIVE VIEW OF ASSURE S.S RESIDENCE**

ASSURE  
SS  
Residence

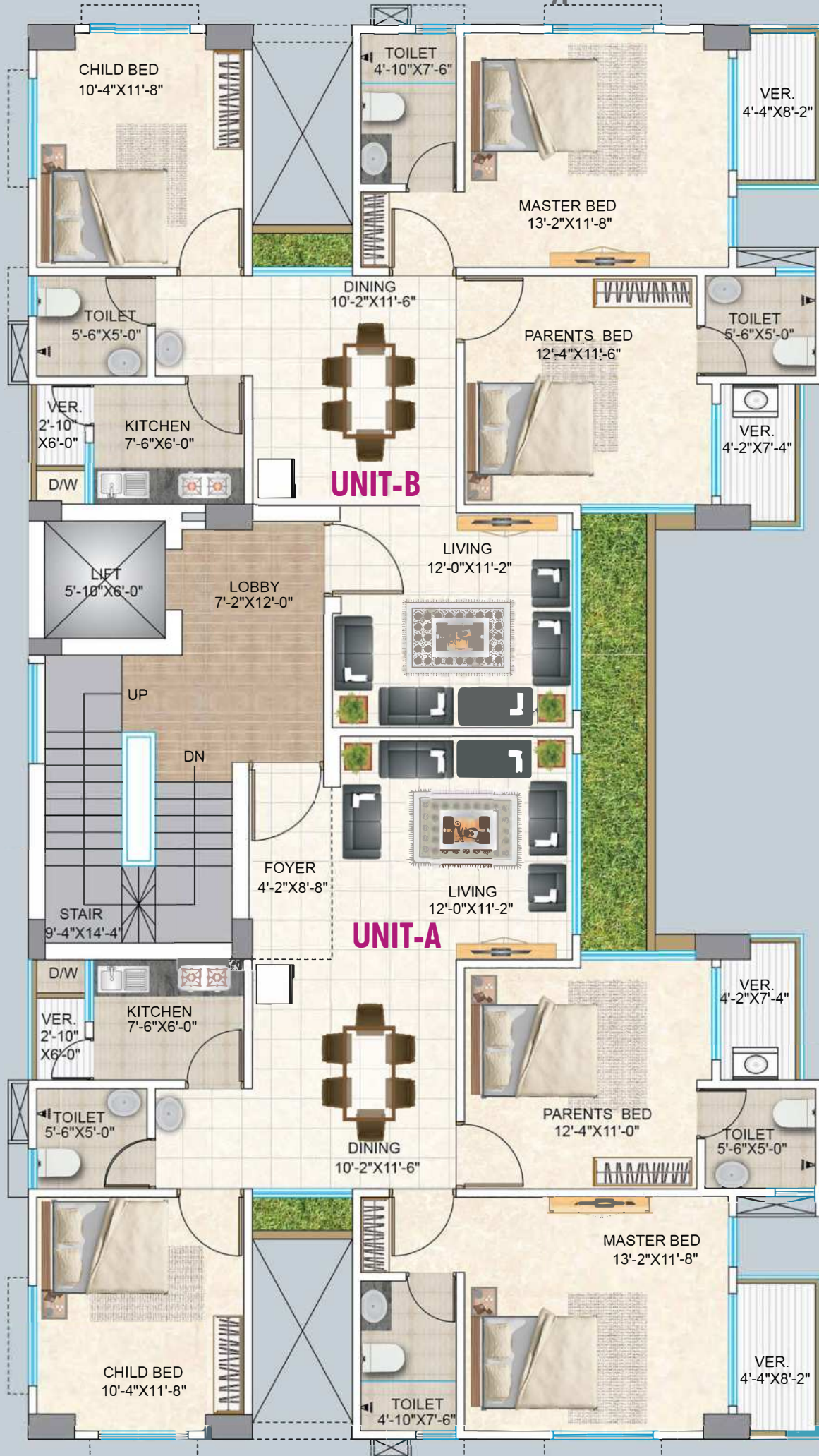
# GROUND FLOOR PLAN



# 1ST TO 7TH FLOOR PLAN

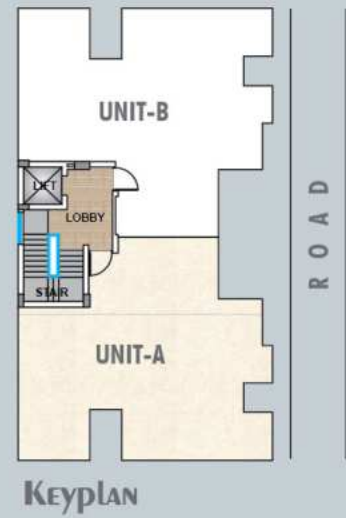
Type A - 1419 sft.

Type B - 1387 sft.



# 1ST TO 7TH FLOOR PLAN

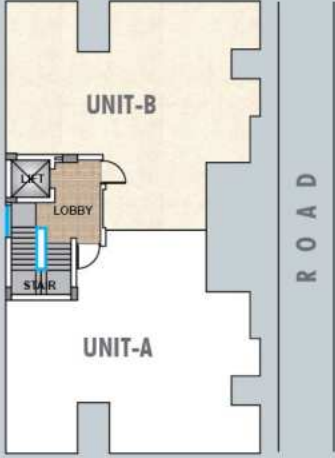
Type A - 1419 sft.



## AXONOMETRIC VIEW

# 1ST TO 7TH FLOOR PLAN

Type B - 1387 sft.

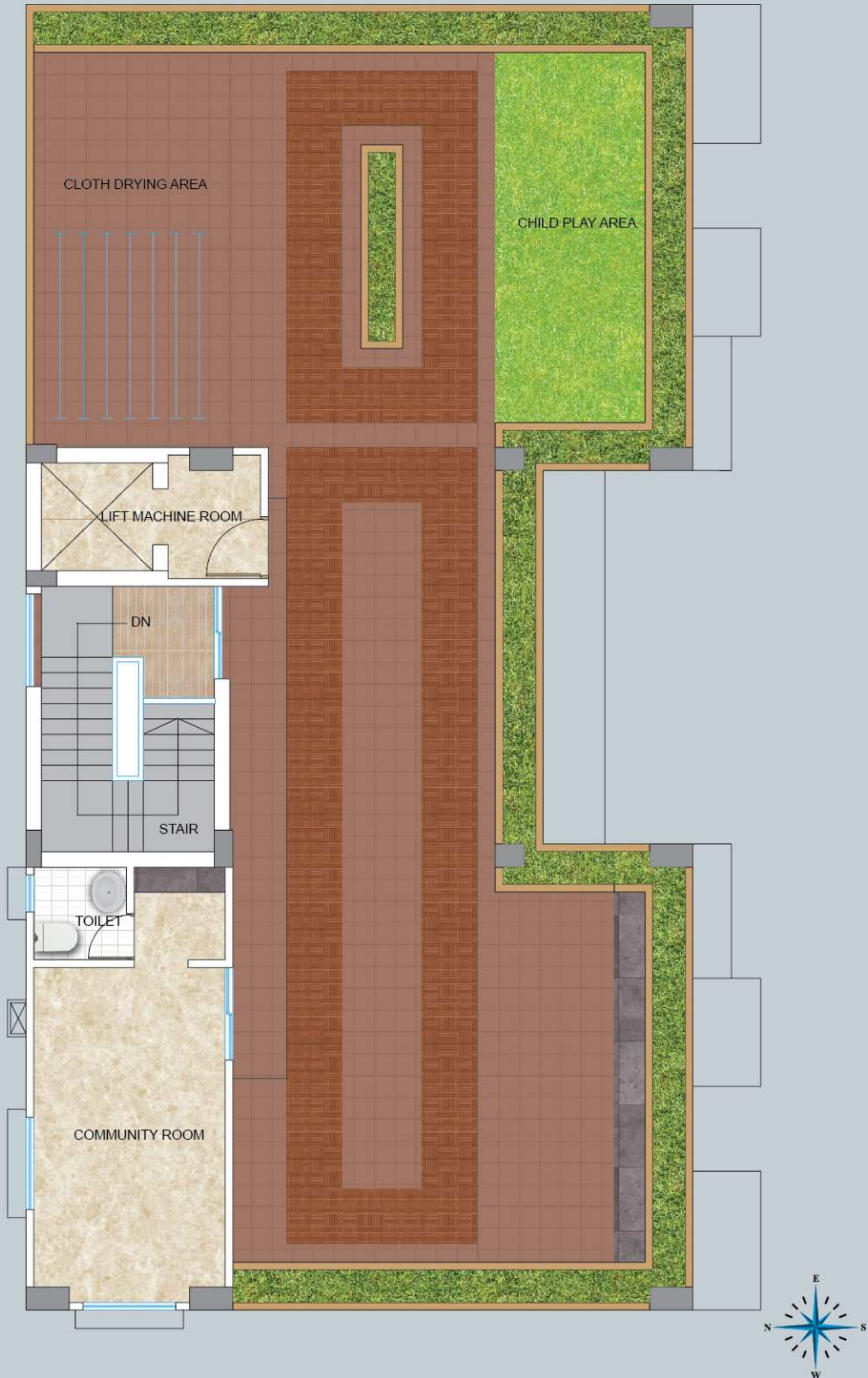


Keyplan



AXONOMETRIC VIEW

# Roof Top Plan



# BIRDS EYE VIEW OF ASSURE S.S RESIDENCE



# FEATURES & AMENITIES

## BUILDING ENTRANCE

Secured, decorative and stylish main gate with combination of M.S and others materials depends upon the architectural design & perspective view of the building.

Stylish and decorative logo (**ASSURE S.S RESIDENCE**) with attractive background (Granite), To-Let plate at suitable location in front of project.

Attractive and captivating planter with adequate lighting in front of building (As per architectural design).

Guard Post at suitable place in the entrance of the building. (As per Architectural design)

Common area will be designed by the Architect with high class features as per design of the landscaping.

## CAR PARKING & DRIVEWAY

Comfortable and functional driveway and easy ramp with pavement tiles.

Protective metal column guard and security grill with fiber sheet over boundary wall.

Reserve car parking with proper marking and car parking number plate.

Adequate lighting at parking and driveway area.

Impressive planter adjacent to boundary wall (As per design).

One parking area may be reserve as per developers prerogative.

## RECEPTION

An elegantly design reception lobby with Tiles (24 x 24) in the floor (depends on space and as per Architectural design). (RAK / BDL / AKIJ / Equivalent)

Decorative ceiling with lights as required will be used to enhance the grandeur of the lobby.

Impressive and workable reception desk (As per Architectural design).

Intercom connection with each apartment from reception.

Notice board, Emergency number plate & logo of Assure at suitable location.

Decorative ceiling with lights as per required will be used to enhanced the grandeur of the lobby.

## STAIR & LOBBY

None skid (AKIJ/DBL/RAK/Equivalent) Tiles (12 x 24) at Ground floor to roof top stair lobby (as per Architectural design).

Mirror Polish / Rustic Tiles (AKIJ/DBL/RAK/Equivalent) on ground floor to top floor lift wall (as per Architectural design).

SS hand rail with stair railing (MS/SS Combination) through the stair case and king post at ground floor (as per Architectural design).

## LIFT

01 (one) superior 08 passengers capacity lift.

Brand: Fuji / Canny / Equivalent (China)

Lift will be with -

- VVVF
- Inverter
- Adequate lighting, photocell sensor and emergency alarm.
- Well finished door, cabin and mirrors on the wall
- Capacity to serve resident of every floor
- Hatch door of lift to be SS mirror etching finish in every floor.

## GENERATOR

01 (one) Canopied Generator will be provided to ensure un-interrupted power supply.

The generator will have -

- Engine -Ricardo / Equivalent. (China)
- Rating - as per calculated requirement.
- Capacity - as per requirement.

The Generator will support back-up electricity supply and will serve -

- Lift
- Water pump
- Lighting in common space and stairs
- One light and one fan point of all bedrooms, Living, Dining room and one light point in kitchen and all bathrooms of each apartment.

## SUB-STATION

A Sub-station will be arranged on the ground floor

Sub Station Equipments-

- Transformer - rating as per equipment
- HT Switch Gear (LBS), if required
- Power Factor Improvement (PFI) Plant
- Drop Out Fuse (DOF).
- Lightening Arrestor (LA)
- Heat shrinkable kit

## WATER RESORVOIR & WATER PUMP

Sufficient capacity, leak proofed & hygienic R.C.C underground water reservoir (UGWR) & overhead water tank (OHWT).

Sufficient capacity two (02) unit water pumps (Pedrollo).

## INTERCOM

Intercom system connected to each apartment from reception (Panasonic / Equivalent).

Master set with PABX system at reception and wall mount hand set at suitable location in each apartment.

## CABLE TV

Cable TV provision with multi-channel capacity from commercial cable operator in living room and master bed room by high quality dish / TV socket and cable.

Individual dish junction box provision at ground floor for smooth and clear picture.

## INTERNET

Provision for one Internet line in each Apartment at suitable location.

## GROUND FLOOR FACILITIES

Termite protection all through the ground floor & surrounding the boundary wall.

Guard room, care taker room with toilet & kitchen, drivers waiting area with seating facilities at suitable location at ground floor depends on availability of space.

Car washing facilities near parking area.

## ROOF TOP

Aesthetic and durable finished roof top, with pavement tiles over 3 inch layer roof treatment by special type CC casting with chemical to make the roof water proof and decreasing heat.

Entrancing planter and seating space at suitable location at roof top. Protective parapet wall and adequate lighting facilities.

Water proofing finished roof top with well-designed rain water drainage system.

Tiles finished seating space and pavement tiles finished jogging track.

Cloth drying area in suitable location.

Safe Child play area (as per design and depends on space).

## DOORS

Main door : Decorative door shutter with-

- Imported handle lock
- Door chain
- Eye viewer

Apartment number plate

Main door frame are (Section: 5.75"x2.25") made of Teak Chamble / Equivalent.

All internal door frames are (Section: 5.75"x2.25") made of Mahogany / Sheel Koroi / Equivalent.

All bath rooms' door frames are made of Mahogany / Equivalent wood and section will be Assure standard.

All internal door shutters will be teak Chamble veneer flash door.

All bath rooms door shutter will be PVC laminated.

All door frame and shutter will be finished by high quality French polish.

## WINDOWS

Assure standard MS grill at every window.  
4-inch silver color aluminum section (KAI / ALTEC / BTA / FU-WANG / Equivalent) with 5 mm clear glass and mosquito net provision.  
Provision of water proofing barrier at bottom and two sides made of cement mortar.  
Proper use of mohair and rubber to make the shutter air tight.  
All window shutters should be sliding as per Architectural design.

## WALLS

1st class auto brick for internal and external wall.  
Smooth plaster finished with paint.  
Exterior wall should be provided 5"/10" inch subject to architectural design.  
Internal wall 5 inch thick.  
Chemical will be used to protect the wall from damp and salt.  
Water barrier at window seal and drip course at sunshade will be provided to protect rain water.

## FLOOR

Mirror polished tiles (24x24) in the general floor (DBL/RAK/AKIJ/Equivalent)  
4-inch skirting will be provided.

## PAINTING & POLISHING

Soft Color plastic paint in all internal walls and ceilings. (Berger/Asian/Elite/Equivalent)  
French Polished Doorframes and Shutters.  
Exterior Wall will be Weather coat paint (Berger/Asian/Elite/Equivalent).  
Grille and railing - Synthetic Enamel Paint. (Berger/Asian/Elite/Equivalent)  
Main Gate- Spray finished with duco paint.  
Column guard painted with Synthetic Enamel Paint. (Berger/Asian/Elite/Equivalent).

## ELECTRICAL

Concealed electrical wiring by using high quality PVC pipe all over the building.  
Individual circuit as per electrical design.  
Standard SDB (Havels / Equivalent).  
Air condition provision Master & 2nd bed room with well drainage system and outdoor unit placing system.  
One two pin all bed, dining and drawing and one three pin all bed room and Kitchen.  
One refrigerator point at dining space (as per design).  
Washing machine point at suitable location (as per space accommodation and design).  
All electric outlets will be connected with earthing.  
All electrical cable will be BRB/BBS/PARTEX/ Equivalent.  
Switch socket MK / Aulmo / Equivalent (China) / Energy Super.  
All circuit breaker will be Chint / Havels / Equivalent.  
Calling bell provision at main entry.

## KITCHEN

Impressive and comfortable tiles finished work top.  
DBL/RAK/AKIJ/Equivalent (12"x20") wall tiles up to 7' height around kitchen work top.  
Matching floor tiles (DBL/RAK/AKIJ/Equivalent).  
Washing corner at verandah or under sink with tiles finished and well drainage system.  
Double gas burner provision.  
Single bowl single tray high quality stainless steel.  
Sink mixer (Sattar/Sharif/Equivalent).  
One electric point on work top for electrical appliance.  
Exhaust fan provision at suitable location.  
All others CP fittings are Sattar/Sharif/Equivalent.  
Kitchen hood provision will be provided.  
Hot & Cold line provision will be provided.

## BATH ROOMS

### MASTER BATHROOM

Separate shower zone will be provided at Master bath made of tiles barrier, cabinet basin with tiles work top and high standard commode with flashing system (WC) (RAK/Equivalent). Hot & cold-water line provision with shower mixer with spout, basin mixer, angle stop cock, moving shower etc. by Sattar/Sharif/ Equivalent. Bathroom accessories (Soap case, towel rail & paper holder) are made of good quality stainless steel. Full height (RAK / DBL/ AKIJ/Equivalent) wall tiles (12" X 20") and matching floor tiles (12" X 12") will be provided in the Master bath. One large mirror will be provided in the master bath.

### PARENT'S BATHROOM

Separate shower zone will be provided at Parent's bath made of tiles barrier, pedestal basin and high standard commode with flashing system (WC) (RAK / Equivalent). Hot & cold-water line provision with shower mixer with spout, basin mixer, angle stop cock, moving shower etc. by Sattar/Sharif/ Equivalent. Bathroom accessories (Basin shelf, Soap case, towel rail & paper holder) are made of good quality stainless steel. Full height (RAK / DBL/ AKIJ/Equivalent) wall tiles (12" X 20") and matching floor tiles (12" X 12") will be provided in the Parent's bath. One large mirror will be provided in the Parent's bath.

### COMMON BATHROOM

At common bath to be provided pedestal basin and high standard commode with flashing system (WC) (RAK/Equivalent). Only cold water line provision with conceal stop cock, pillar cock, bib cock, angle stop cock, moving shower etc. by Sattar/Sharif / Equivalent. Bathroom accessories (Basin shelf, Soap case, towel rail & paper holder) are made of good quality stainless steel. Full height (RAK /DBL/ AKIJ/Equivalent) wall tiles (12" X 20") and matching floor tiles (12" X 12") will be provided in the common bath. One large mirror will be provided in the common bath.

### DINING BASIN

Padestal basin at dining area with light point.  
7'-0" Height DBL/RAK/Akij/Equivalent 12"X20" wall tiles at dining basin.  
Only cold water line provision with Sattar/Sharif/ Equivalent fittings.



# FEATURES & AMENITIES

Total Foundation and Superstructure Design and Supervision by team of reputed and professional Structural Design Engineers.

Structural Design Parameters based on Bangladesh National Building Code (BNBC), American Concrete Institute (ACI), American Standards of Testing Materials (ASTM), British Standard (BS) and Indian Standard (IS) Codes.

Structural Analysis for Design utilizes the latest Methodology.

Heavy Reinforced Cement Concrete Foundation.

Systematic Structural Combination of Steel Reinforced Concrete Frame and Shear wall Core.

Floor Slabs all Reinforced Cement Concrete.

Sub-Soil Investigation and Soil Composition comprehensively analyzed.

Comprehensive Checking and Testing of all steel reinforcement by professional Design and Supervising Engineers.

All materials including Steel, Cement, stone chips, Sylhet Sand and other Aggregates etc. of highest available standard and screened for quality .

Direct Supervision at every stage of construction by a team of experienced and qualified Civil Engineers to ensure Highest Quality of Workmanship.

Construction Site Equipment employed includes Vibro-hammers, Mechanical Rollers, Steel Cutting & Bending Equipment, Welding Equipment, Concrete Mixers, Concrete Vibratos, Water Pumps, Material Handling Equipment, Leveling Instruments etc.

Systematic Testing of concrete and other completed work samples at every from Quality Control Laboratories.

Protection from Cyclone Winds up to prevalent speeds incorporated at structural design.

Structure designed will be flowed by Seismic zone of Bangladesh according to BNBC for Earth quake.

## MAJOR STRUCTURAL MATERIALS

### STEEL

Deformed Bar Manufactured By RAHIM /Metrocem/ RSRM/ GPH/ KSRM / Equivalent.

### CEMENT

Seven Rings/ Bashundhara/Shah/Amancem/Metrocem /Equivalent.

### AGGREGATES

Stone chips will be used for all major structure (foundation, columns, beams, slabs & water reservoir).

### BRICKS

1st class auto/Hollow bricks.

### SAND

- I. Coarse Sand (FM-2.5 to FM-3.00)
- II. Fine Sand (FM-1.2 to FM-1.50)

### UTILITY CONNECTIONS

Gas pipeline facility for each apartment will be provided, connections will depend on Government approval/ Sanction policy.

Double burner gas stove provision for each apartment. LPG provision in case of unavailability of Government connection.

All Apartments will have Independent Electric meter. A common WASA meter for total complex.

### GENERAL AMENITIES OF THE COMPLEX

Electricity Supply approx 220V/440V from DESCO source with separate Main cable and HT Panel/ Distribution Board.

Water Supply Connection from WASA sufficient as per Total Calculated Consumption.

Underground Water Reservoir with one Main Lifting Pumps and Standby Pump.

Sewerage System for long-term requirement.





## RESERVATION

Application for allotment of apartments in **ASSURE S.S RESIDENCE** should be on the prescribed application form, duly signed by the applicant along with the earnest money and other necessary documents. Allotment will be made on "first come first serve basis". The company reserves the right to accept or reject any application without assigning any reason thereto.

## ALLOTMENT

After receipt of the application and booking money, ASSURE DEVELOPMENT & DESIGN LTD. will issue an allotment letter and payment schedule. The applicant/ allottee shall then start making payments as per the schedule of payment.

## ALLOTMENT TRANSFER

Until full payment of all installment and other charges & registration; the buyer shall not have the right to transfer the allotment to a third party. In case of transfer before registration, buyer must pay 9% money of the total property value to the developer.

## PAYMENT

All payment of booking money, installments, additional works and other charges should be made by A/C payee cheque or pay order or bank draft or cash in favour of ASSURE DEVELOPMENT & DESIGN LTD. Foreigners and Non-Resident Bangladeshi may make payment in foreign exchange by TT or DD as per exchange rate issued by Bangladesh Bank as on the date of application and subsequently on the dates of the installments paid.

## SCHEDULE OF PAYMENTS

That the SECOND PARTY must strictly adhere to the schedule of payments indicated in this allotment agreement. Delay in payments beyond the schedule date will make allottee liable to pay a delay charges of 5% per month interest on the amount of payment delayed. If the payment is delayed for 30 days, the company shall have the right to cancel the allotment. In such case the amount paid by the allottee will be refunded after deducting 5% of the total sales price only after resale of the apartment.

## LOAN FACILITIES

If the allottee desire a Housing Loan, the company will do all that is possible to help secure the loan.

## DOCUMENTATION VAT & OTHER CHARGES

The allottee will pay stamp duties, VAT, registration fee, gain tax, share transfer fee, documentation charges and other miscellaneous expenses likely to be incurred in connection with the deed of agreement, allotment, registration and transfer etc. Only the actual sums shall be charged.

## DEVELOPER'S RIGHT

The company reserves the right to make changes in both architectural and structural design of the project.

## POSSESSIONS

The possession of the apartment will be handed over to the purchaser after completion of the apartment and after full payment of the installment and other charges. Until and unless the dues are paid, possession of the apartment will be held by the company.

## CUSTOMER CARE AND SERVICE

After performing the deed of Agreement, flat purchaser will contact with the Customer Care Department for any kind of co-operation. The Customer Care Department is committed to serve each and every purchaser through their thick & thin.

## DESIGN CHANGE

During the construction work, all allottee must consult with ASSURE DEVELOPMENT & DESIGN LTD. about any changes of both architectural & structural within the Apartment. Otherwise the developer will not be liable for any risk/damage due to lack of previous notice.

## OWNER'S ASSOCIATION

The purchaser must undertake to become a member of the owner's association, which will be formed by the developer with the view of maintaining the general affairs of the complex interest. For reserve fund, each apartment owner may have to deposit an amount of money as per association decision.

## NOTE

*Other financial terms and conditions will be followed according to Company rules.*

*Client will not enforce any change in building elevation. Upgradation of different finishing material will be done on the basis of additional payment.*



ALL RIGHT RESERVED

**Disclaimer:**

This Brochure Is Exclusively Corporate Marketing Publication of  
**ASSURE DEVELOPMENT AND DESIGN LTD.**

**Hotline: 09612 008800**

Since 2007

®

**ASSURE**  
G R O U P

ISO 9001: 2015 QMS Certified

MEMBER

REHAB

RAJUK

ENLISTED

[www.assuregroupbd.com](http://www.assuregroupbd.com)

Contact Us : 01730088001, 01730088006,  
01730088005, 01708146378,  
01730088004, 01708146377,  
01708146379

01730088003, 01729202007,  
01730088002, 01708146380,  
01708146375, 01708146376,  
01708146385, 01729202008

Corporate Office : Jabbar Tower, Level-5 & 19,  
42, Gulshan Avenue, Gulshan Circle-1,  
Dhaka-1212.

Phone : +88-02-58812718, 58812719, 58812720,  
9885763, 9850154

Fax : 88-02-9861341

E-mail : [info@assuregroupbd.com](mailto:info@assuregroupbd.com)